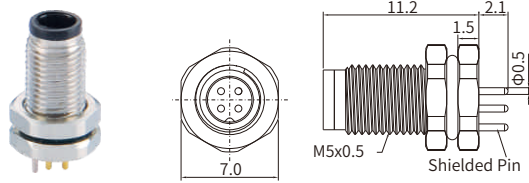


# M5 Sensor and Actuator

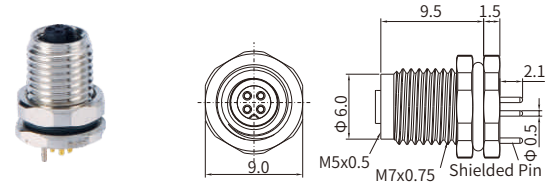


## M5 Straight Connector, Panel Mount, PCB Type, Front fastened, With Earth Pin

Male



Female



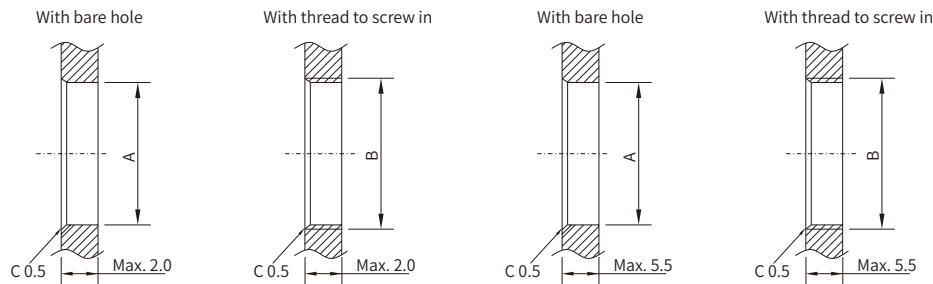
### Specifications

Contacts	3	4
Pin layout(Male)		
Pin layout(Female)		
Standard	IEC 61076-2-105	
Ambient temperature	-25°C ~ +90°C	
Connector insert	TPU; PA+GF	
Connector contacts	Brass with gold plated	
Coupling nut/screw	Brass with nickel plated	
Seal/O-ring	Epoxy resin / FKM	
Insulation resistance	≥100MΩ	
Contact resistance	≤5mΩ	
Earth tag/pin	Available	
IP rating	IP67 in locked condition	
Mating endurance	>500 cycles	
Rated current	1 A	
Rated voltage	60V AC/DC	

### Part Number

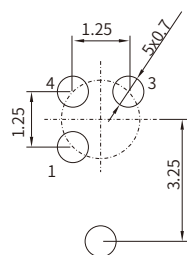
Pins	Male	Female
3	MB05MBSAFF03ST	MB05FBASFF03ST
4	MB05MBSAFF04ST	MB05FBASFF04ST

### Panel Cut-out Dimensions

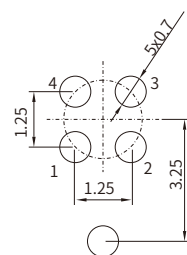


	A	B
M5	5.0 <sup>+0.1</sup> <sub>-0</sub>	M5x0.5
M7	7.0 <sup>+0.1</sup> <sub>-0</sub>	M7x0.75

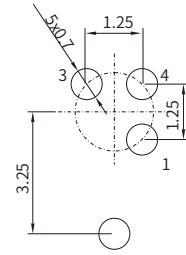
### PCB Layout



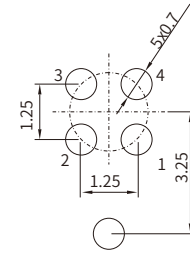
3P (Pin OD: Φ 0.5) Male



4P (Pin OD: Φ 0.5) Male



3P (Pin OD: Φ 0.5) Female



4P (Pin OD: Φ 0.5) Female